



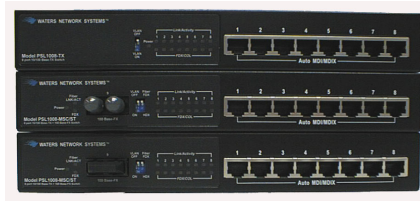
ProSwitch® Classroom/Workgroup Switches

Models: **MS1008 (Security Housing)**
PSX1008

Key Highlights

- ▶ Managed 8-port switch with 8 10/100 Base-TX ports and optional 9th port:
 - 1000Base-SX or LX
 - 1000Base-SX and 100BaseFX dual media port
 - 100Base-FX (MM or SM)
- ▶ Security housing (MS1008 models):
 - Designed for easy upgrade and removal of internal switch
 - Protects electronics and limits tampering
 - Cable management for secure connectivity
 - Compact 10" x 11" x 2" size
 - Easily mounts to wall or table
- ▶ Management features include:
 - Access via web, Telnet or CLI
 - IGMP
 - DHCP
 - QoS
 - VLANs
 - GVRP
 - Port mirroring
 - Spanning Tree
 - 802.3ad Trunk with LACP
 - RMON
 - SNMP
 - Port Security
- ▶ ST and SC fiber connectors available
- ▶ Backed by Waters' limited lifetime warranty

MS1008 and PSX1008 Managed Ethernet Switches



PSL1008-TX
PSX1008-MST
PSX1008-MSC



MS1008 Security Housing

Waters Network Systems' MS and PSX1008 switches provide the ultimate in flexibility for small to medium sized workgroups. The switch models are compact eight and nine port switches that deliver power, performance and reliability in a cost-effective, space. These switches are designed to be used outside the wiring closet in the end-user workspace. Ideally suited for small workgroups, classrooms, home or office applications, the switch models allow multiple users to attach to a single drop of cable. The internal power supply assures years of reliable operation.

The MS1008 models have been designed in an enclosed ruggedized housing that protects the electronics and limits tampering.

Features and Benefits

- **QoS supports layer 4 classification.** In addition to 802.1p Priority Queue support, all models support programmable higher layer classification and prioritization to enable enhanced QoS for real time applications based on information passed from Layer 2 to Layer 4 such as VoIP.
- **Port mirroring on helps monitor the network.** Port mirroring copies traffic from a specific port to a target port. This function helps track network errors or abnormal packet transmission without interrupting the flow of data.
- **VLAN capable for performance and security.** VLANs are used to isolate traffic between different users and thus provides better security. Limiting the broadcast traffic to within the same VLAN broadcast domain also enhances performance. The PSX models support 802.1Q Tagged VLAN, Protocol VLAN, GVRP supported VLAN ID and up to 256 groups.

WATERS NETWORK SYSTEMS
www.watersnet.com

Corporate Headquarters 7401 Metro Blvd., Suite 560 Edina, MN 55439 Toll Free: 800.862.3894 Phone: 952.831.5604 Fax: 952.831.5605	Manufacturing 945 37th Avenue, NW, Rochester, MN 55901 Toll Free: 800.328.2275 Phone: 507.285.1951 Fax: 507.285.1952
---	---



MS and PSX1008 Ethernet Switches

ORDERING INFORMATION

Model	Description
MS1008 Series	Managed Ethernet switch with classroom/workgroup security housing
MS1008-TX	8-port managed switch with 8 10/100Base-TX RJ45 ports.
MS1008-MSC	9-port managed switch with 8 10/100Base-TX RJ45 ports plus 1-port 100Base-FX MM fiber with SC connector
MS1008-MST	9-port managed switch with 8 10/100Base-TX RJ45 ports plus 1-port 100Base-FX MM fiber with ST connector
MS1008-SSC-30	9-port managed switch with 8 10/100Base-TX RJ45 ports plus 1-port 100Base-FX SM (30km) fiber with SC connector
MS1008-GSXSC	9-port managed switch with 8 10/100Base-TX RJ45 ports plus 1-port 1000Base-SX MM fiber with SC connector
MS1008-GLXSC-10	9-port managed switch with 8 10/100Base-TX RJ45 ports plus 1-port 1000Base-LX SM (10km) fiber with SC connector
PSX-1008 Series	Managed Ethernet switch
PSX-1008-TX	8-port managed switch with 8 10/100Base-TX RJ45 ports.
PSX-1008-MSC	9-port managed switch with 8 10/100Base-TX RJ45 ports plus 1-port 100Base-FX MM fiber with SC connector
PSX-1008-MST	9-port managed switch with 8 10/100Base-TX RJ45 ports plus 1-port 100Base-FX MM fiber with ST connector
PSX-1008-SSC-30	9-port managed switch with 8 10/100Base-TX RJ45 ports plus 1-port 100Base-FX SM (30km) fiber with SC connector
PSX-1008-GSXSC	9-port managed switch with 8 10/100Base-TX RJ45 ports plus 1-port 1000Base-SX MM fiber with SC connector
PSX-1008-GLXSC-10	9-port managed switch with 8 10/100Base-TX RJ45 ports plus 1-port 1000Base-LX SM (10km) fiber with SC connector

SPECIFICATIONS

OPERATIONAL CHARACTERISTICS:

MAC Address Table

- ▶ PSX1008 models: 8k
- ▶ PSL1008 models: 2k

Switching Mode

- ▶ Store-and-forward

Memory Buffer Size

- ▶ PSX1008 models: 2Mb
- ▶ PSL1008 models: 768Kb

Performance

- ▶ Non-blocking wire speed

MANAGEMENT FEATURES:

- ▶ Web-based, Telnet and console
- ▶ SNMP
- ▶ Port setting for duplex and speed
- ▶ Port trunking (4 groups)
- ▶ Port based and tagged VLANs (up to 256)
- ▶ QoS
- ▶ IGMP
- ▶ DHCP
- ▶ GVRP
- ▶ Port mirroring
- ▶ Broadcast storm
- ▶ Spanning tree
- ▶ Port security
- ▶ Firmware upgrade

NETWORK STANDARDS:

All Models:

- ▶ IEEE 802.3
- ▶ IEEE 802.3u
- ▶ IEEE 802.3x
- ▶ IEEE 802.1q

- ▶ IEEE 802.1p
- ▶ IEEE 802.1d
- ▶ IEEE 802.3ad

Gigabit Models:

- ▶ IEEE 802.3ab (100Base-T)
- ▶ IEEE 802.3z (Gigabit fiber)

EMI/SAFETY COMPLIANCE:

FCC Class A, CE, UL cUL

NETWORK CABLE CONNECTORS

RJ45 shielded female ports

- ▶ 10/100Mbps: CAT5 UTP or better
- ▶ Multimode SC, ST or MTRJ connectors
- ▶ Singlemode SC connectors (up to 30km)

POWER SUPPLY:

Input Voltage

- ▶ 110 to 240 VAC, 50 to 60Hz

Power Consumption:

- ▶ 17 watts maximum
- ▶ 19 watts maximum (Gigabit models)
- ▶ 10 watts maximum (MS and PSX1008-1FX1SX)

OPERATING ENVIRONMENT:

Ambient Temperature:

- ▶ 32° to 113°F (0° to 45°C)

Storage:

- ▶ -40° to 158°F (-40° to 70°C)

Ambient relative humidity:

- ▶ 10% to 90% (non-condensing)

MECHANICAL:

Enclosure:

- ▶ Rugged high-strength sheet metal suitable for stand-alone, wall or tabletop mounting
- ▶ Cooling Method: Convection cooled

PHYSICAL CHARACTERISTICS:

MS1008 Dimensions:

- ▶ 11 x 10.5 x 2 in (279 x 267x 51mm)

Weight:

- ▶ 3.7 lbs (1.68kg)

PSX1008 Dimensions:

- ▶ 10 x 5 x 2 in (250 x 132 x 37.5mm)

Weight:

- ▶ 2.5 lbs (1.13kg)

WARRANTY:

Limited Lifetime