



ProSwitch® Xpress/Lite Classroom/Workgroup Switches

Models: **PSX1008 (Managed)**
PSL1008 (Unmanaged)

Key Highlights

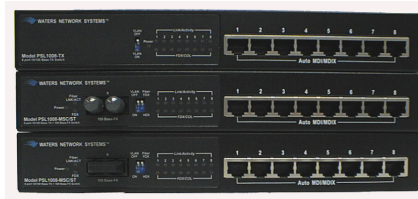
- ▶ Managed 8-port switch with 8 10/100 Base-TX ports and optional 9th port:
 - 1000Base-TX, SX or LX
 - 1000Base-SX and 100BaseFX dual media port
 - 100Base-FX (MM or SM)
- ▶ Unmanaged 8-port switch with 8 10/100 Base-TX ports and optional 9th port:
 - 1000Base-TX, SX or LX
 - 100Base-FX (MM or SM)
- ▶ PSX1008 management features include:
 - Access via web, Telnet or CLI
 - IGMP
 - DHCP
 - QoS
 - VLANs
 - GVRP
 - Port mirroring
 - Spanning Tree
 - 802.3ad Trunk with LACP
 - RMON
 - SNMP
 - Port Security
- ▶ PSL models supports port-based VLAN
- ▶ ST and SC fiber connectors available
- ▶ Backed by Waters' limited lifetime warranty
- ▶ Made in the U.S.A.

WATERS NETWORK SYSTEMS
www.watersnet.com

Corporate Headquarters
7401 Metro Blvd., Suite 560
Edina, MN 55439
Toll Free: 800.862.3894
Phone: 952.831.5604
Fax: 952.831.5605

Manufacturing
945 37th Avenue, NW,
Rochester, MN 55901
Toll Free: 800.328.2275
Phone: 507.285.1951
Fax: 507.285.1952

PSX and PSL1008 Ethernet Switches 10/100/1000Mbps



PSL1008-TX
PSX1008-MST
PSX1008-MSC



PSX1008-TX
PSX1008-GSXSC
PSX1008-MSC

Waters Network Systems' PSX and PSL1008 switches provide the ultimate in flexibility for small to medium sized workgroups. The 1008 models are compact eight and nine port switches that deliver power, performance and reliability in a cost-effective, space saving design.

The PSX and PSL1008 switches are designed to be used outside the wiring closet in the end-user workspace. Ideally suited for small workgroups, classrooms, home or office applications, the PSX and PSL1008 models allow multiple users to attach to a single drop of cable. The internal power supply assures years of reliable operation.

Twelve models are available to support the connectivity demands of any fiber or copper based LAN. All models provide 8 10/100Base-TX copper ports with options for an additional 100Base-FX, 1000Base-TX, 1000Base-SX or 1000Base-LX port configurations. The dual media configuration provides an ideal solution for future migration from an existing Fast Ethernet fiber-based LAN to Gigabit speeds.

Features and Benefits

- **802.3x Flow Control.** Compliant for full duplex and back pressure flow control for half duplex.
- **MDI/MDI-X function.** All models provide auto-cross negotiation, eliminating the need for cross over cables.
- **QoS supports layer 4 classification.** In addition to 802.1p Priority Queue support, the PSX-1008 models also support programmable higher layer classification and prioritization to enable enhanced QoS for real time applications based on information passed from Layer 2 to Layer 4 such as VoIP.
- **Port mirroring on the PSX-1008s helps monitor the network.** Port mirroring copies traffic from a specific port to a target port. This function helps track network errors or abnormal packet transmission without interrupting the flow of data.
- **VLAN capable for performance and security.** VLANs are used to isolate traffic between different users and thus provides better security. Limiting the broadcast traffic to within the same VLAN broadcast domain also enhances performance. The PSX models support 802.1Q Tagged VLAN, Protocol VLAN, GVRP supported VLAN ID and up to 256 groups.



PSX and PSL1008 Ethernet Switches

ORDERING INFORMATION

Model	Description
PSX-1008 Series	Managed Ethernet switch with internal power supply
PSX-1008-TX	8-port managed switch with 8 10/100Base-TX RJ45 ports.
PSX-1008-MSC	9-port managed switch with 8 10/100Base-TX RJ45 ports plus 1-port 100Base-FX MM fiber with SC connector
PSX-1008-MST	9-port managed switch with 8 10/100Base-TX RJ45 ports plus 1-port 100Base-FX MM fiber with ST connector
PSX-1008-SSC-30	9-port managed switch with 8 10/100Base-TX RJ45 ports plus 1-port 100Base-FX SM (30km) fiber with SC connector
PSX-1008-GTX	9-port managed switch with 8 10/100Base-TX RJ45 ports plus 1-port 10/100/1000Base-TX RJ45
PSX-1008-GSXSC	9-port managed switch with 8 10/100Base-TX RJ45 ports plus 1-port 1000Base-SX MM fiber with SC connector
PSX-1008-GLXSC-10	9-port managed switch with 8 10/100Base-TX RJ45 ports plus 1-port 1000Base-LX SM (10km) fiber with SC connector
PSX-1008-1FX1SX	9-port managed switch with 8 10/100Base-TX RJ45 ports plus 1-port 100Base-FX MM fiber with SC connector and 1 mini GBIC slot for 1000Base-SX or LX fiber
PSL-1008 Series	Unmanaged Ethernet switch with internal power supply
PSL-1008-TX	8-port unmanaged switch with 8 10/100Base-TX RJ45 ports.
PSL-1008-MSC	9-port unmanaged switch with 8 10/100Base-TX RJ45 ports plus 1-port 100Base-FX MM fiber with SC connector
PSL-1008-MST	9-port unmanaged switch with 8 10/100Base-TX RJ45 ports plus 1-port 100Base-FX MM fiber with ST connector
PSL-1008-SSC-30	9-port unmanaged switch with 8 10/100Base-TX RJ45 ports plus 1-port 100Base-FX SM (30km) fiber with SC connector

SPECIFICATIONS

OPERATIONAL CHARACTERISTICS:

MAC Address Table

- ▶ PSX1008 models: 8k
- ▶ PSL1008 models: 2k

Switching Mode

- ▶ Store-and-forward

Memory Buffer Size

- ▶ PSX1008 models: 2Mb
- ▶ PSX1008-1FX1SX: 1Mb
- ▶ PSL1008 models: 768Kb

Performance

- ▶ Non-blocking wire speed

PSX1008 MANAGEMENT FEATURES:

- ▶ Web-based, Telnet and console
- ▶ SNMP
- ▶ Port setting for duplex and speed
- ▶ Port trunking (4 groups)
- ▶ Port based and tagged VLANs (up to 256)
- ▶ QoS
- ▶ IGMP
- ▶ DHCP
- ▶ GVRP
- ▶ Port mirroring
- ▶ Broadcast storm
- ▶ Spanning tree
- ▶ Port security
- ▶ Firmware upgrade

PSL1008 SMART SWITCH FEATURES:

- ▶ DIP switch for VLAN setting
- ▶ Port-based VLAN

- ▶ Fiber uplink DIP switch for full and half duplex settings

NETWORK STANDARDS:

All Models:

- ▶ IEEE 802.3
- ▶ IEEE 802.3u
- ▶ IEEE 802.3x

PSX1008 Models:

- ▶ IEEE 802.1q
- ▶ IEEE 802.1p
- ▶ IEEE 802.1d
- ▶ IEEE 802.3ad

PSX1008 Gigabit Models:

- ▶ IEEE 802.3ab (100Base-T)
- ▶ IEEE 802.3z (Gigabit fiber)

EMI/SAFETY COMPLIANCE:

FCC Class A, CE, UL cUL

NETWORK CABLE CONNECTORS

RJ45 shielded female ports

- ▶ 10/100Mbps: CAT5 UTP or better
- ▶ Multimode SC, ST or MTRJ connectors
- ▶ Singlemode SC connectors (up to 30km)

POWER SUPPLY:

Input Voltage

- ▶ 110 to 240 VAC, 50 to 60Hz

Power Consumption:

PSL1008 Models:

- ▶ 7.5 watts maximum

PSX1008 Models:

- ▶ 17 watts maximum

- ▶ 19 watts maximum (PSX1008, GTX, GSXSC and GLXSC)

- ▶ 10 watts maximum (PSX1008-1FX1SX)

OPERATING ENVIRONMENT:

Ambient Temperature:

- ▶ 32° to 113°F (0° to 45°C)

Storage:

- ▶ -40° to 158°F (-40° to 70°C)

Ambient relative humidity:

- ▶ 10% to 90% (non-condensing)

MECHANICAL:

Enclosure:

- ▶ Rugged high-strength sheet metal suitable for stand-alone, wall or tabletop mounting
- ▶ Cooling Method: Convection cooled

PHYSICAL CHARACTERISTICS:

Dimensions PSX Models:

- ▶ 10 x 5 x 2 in (250 x 132 x 37.5mm)

Weight:

- ▶ 2.5 lbs (1.13kg)

Dimensions PSL:

- ▶ 9.75 x 5.25 x 1.5 in (248 x 133 x 38mm)

Weight:

- ▶ 2.5 lbs (1.13kg)

WARRANTY:

Limited Lifetime Made in U.S.A.